



The 22nd ASRC International Workshop

Nuclear Fission and Exotic Nuclei

Advanced Science Research Center,
Japan Atomic Energy Agency (JAEA), Tokai, Japan
3 - 5. December. 2014

Supported by

Reimei Program of

Advanced Science Research Center, JAEA



JRR-1

1957 JRR-1 (Japan Research Reactor No.1) first criticality.



Construction Ceremony



The first criticality achieved

- Research on Physics, Chemistry and Biology..
- Isotope Production
- Training for scientists and nuclear engineers (680 people)

1968 Operation stopped.

1962 First criticality of **JRR-3** (domestically produced reactor)

Tokai Campus, JAEA



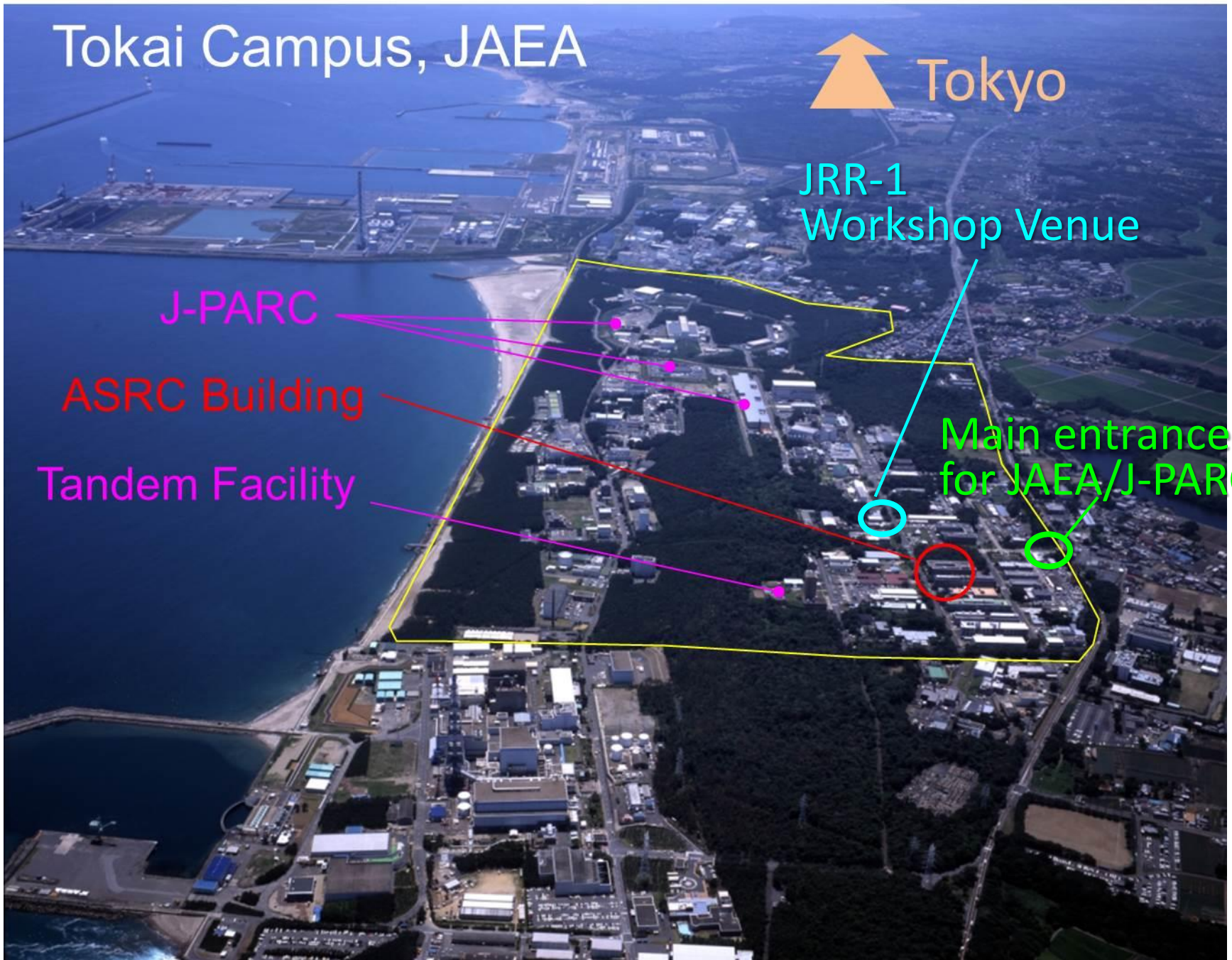
JRR-1
Workshop Venue

J-PARC

ASRC Building

Tandem Facility

Main entrance
for JAEA/J-PARC



ASRC International Workshop on Nuclear Physics

5th ASRC International Workshop
"Perspectives in Nuclear Fission"
14-16.March.2012, Tokai
Participants 71 (from abroad 33)

10th ASRC International Workshop
"Nuclear Fission and Decay of Exotic Nuclei"
21-22.March.2013, Tokai
Participants 47 (from abroad 16)

16th ASRC International Workshop
"Nuclear Fission and Structure of Exotic Nuclei"
18-22.March.2014, Tokai
Participants 60 (from abroad 27)

22nd ASRC International Workshop
"Nuclear Fission and Exotic Nuclei"
3-5.December.2014, Tokai
Participants 64 (from abroad 32)

Next Workshop
March. 2016, Tokai (?)

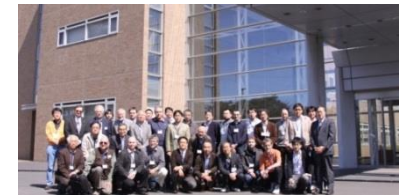
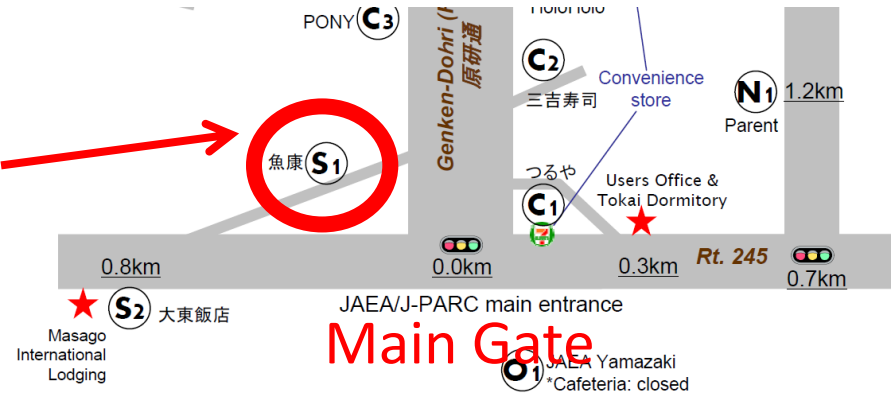


Photo Tomorrow

Program (1/2)

Dinner Today (Wed.)

Restaurant “Uoyasu” (JPY 3000).
Walking distance.



Workshop Photo (Thu.)

After the end of morning session in front of this building.

J-PARC Tour (Thu.)



Bus leaves at 13:00 in front of this Building,
Returns at 14:00.

- MLF (Material and Life Science Facility)
- Neutrino Facility



Program (2/2)

Session in honor of Peter Moller on 70th birthday (Thu.)

Starts from 14:15

Workshop Dinner (Thu.)

Bus leaves at 18:30 in front of this Building.

“Hotel Crystal Palace” at Hitachi-naka City (18:30 – 21:30)

After dinner, we take a bus leaving at 21:00.

Stopping at JR-station (Tokai & Katsuta), Masago and J-PARC Lodging.

Tandem tour (Fri.)

From 16:30 (about 40 min).

- JAEA Recoil Mas Separator



Information

Presentation

- Presentation time includes 5 min discussion.
- Please store your presentation file before your session starts.
- We want to open the presentation slides on the Web.

Lunch

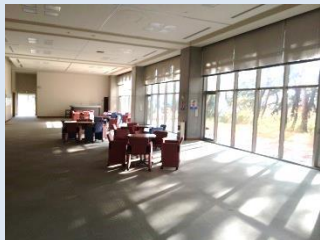
Lunch available at the Cafeteria.

JPY 500 / lunch (Ticket for Ground floor)

When you leave after the Workshop

Please return your **VISITOR card** at the JAEA/J-PARC main entrance or to an organizer. **Please do not miss the card.**

For the help of booking the bus for Narita/Haneda International Airport, Please contact our secretariats.

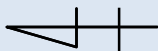


Workshop
Venue

JRR-1
Building

J-PARC

bus stop
♀



ASRC
Building

Building



Cafeteria

Building



Guard
Main gate

TOKAI CAMPUS



R245

Masago-Lodging
(Dormitory)

Tokai station

Tokai Dormitory
(J-PARC)



Restaurant Map

http://asrc.jaea.go.jp/soshiki/gr/chiba_gr/workshop4/index4.html

